


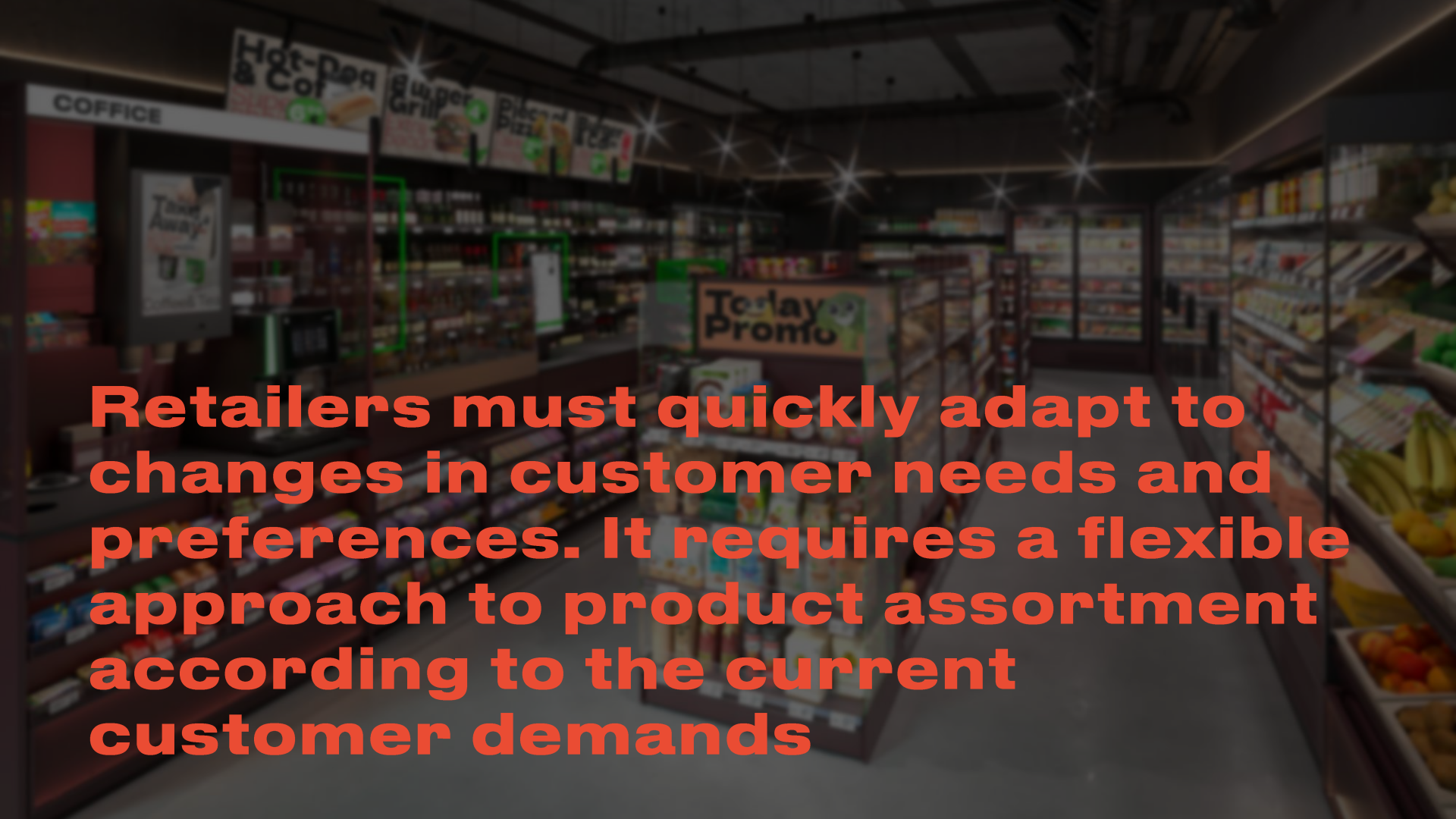
SHELVING SYSTEMS

CORE OF YOUR RETAIL
SPACE

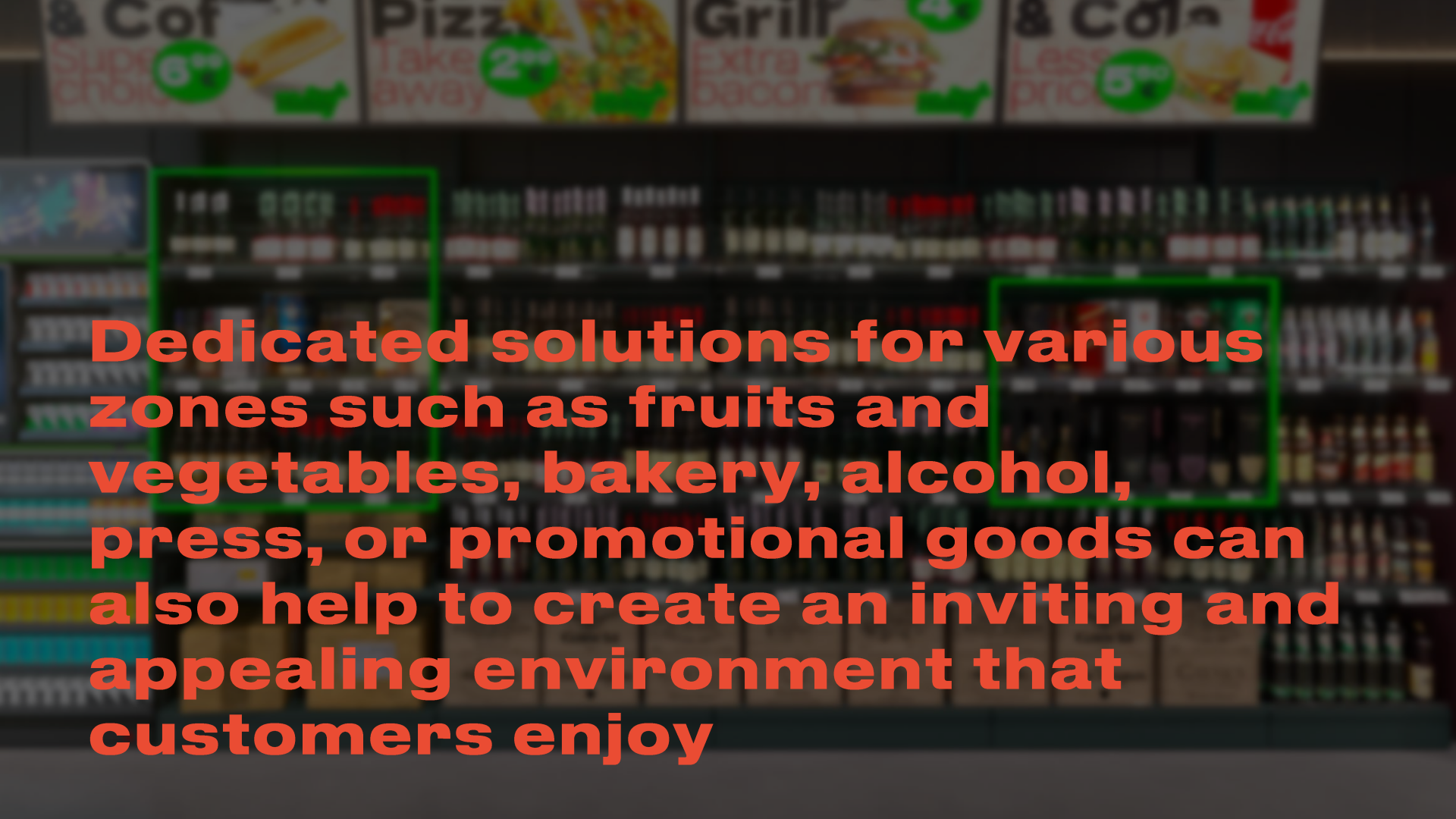
MODERN EXPO

A photograph of a grocery store aisle, slightly blurred and dimly lit. The shelves are stocked with various products, including packaged goods and fresh produce in bins. A sign on the shelf reads "Today Promo". The text is overlaid in a bold, orange-red font.

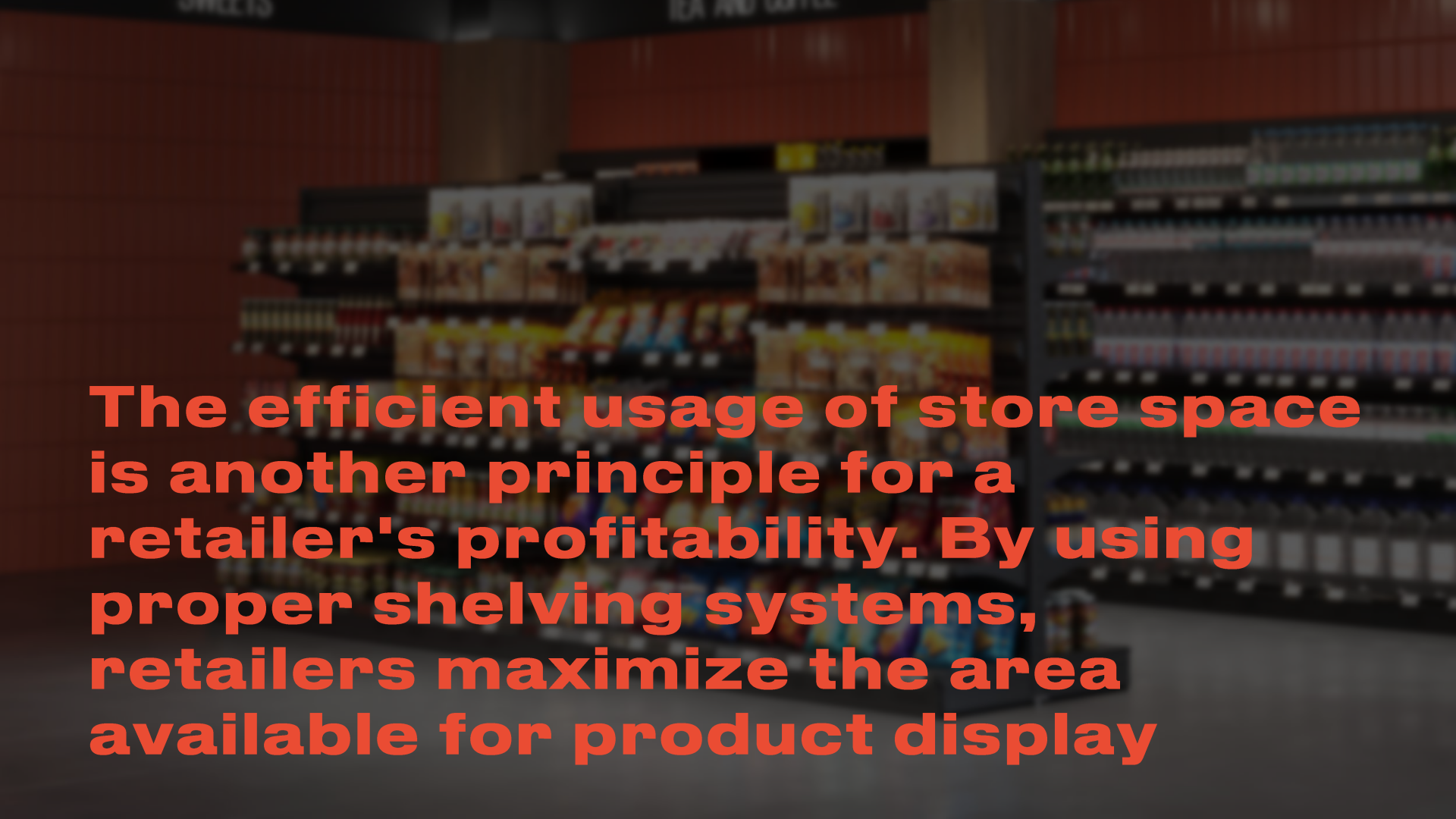
Shelving systems are the base of every store. They provide an organized, accessible, and visually appealing display of the products, helping to attract customers and encourage them to make purchases

A photograph of a grocery store aisle, viewed from a low angle looking down the aisle. The shelves are stocked with various products. In the foreground, a sign reads "Today's Promo". Above the shelves, there are signs for "Hot-Dog & Col", "Super Grill", and "Pizzas". To the left, a sign says "COFFICE". The text "Retailers must quickly adapt to changes in customer needs and preferences. It requires a flexible approach to product assortment according to the current customer demands" is overlaid in a bold, orange font across the center of the image.

Retailers must quickly adapt to changes in customer needs and preferences. It requires a flexible approach to product assortment according to the current customer demands

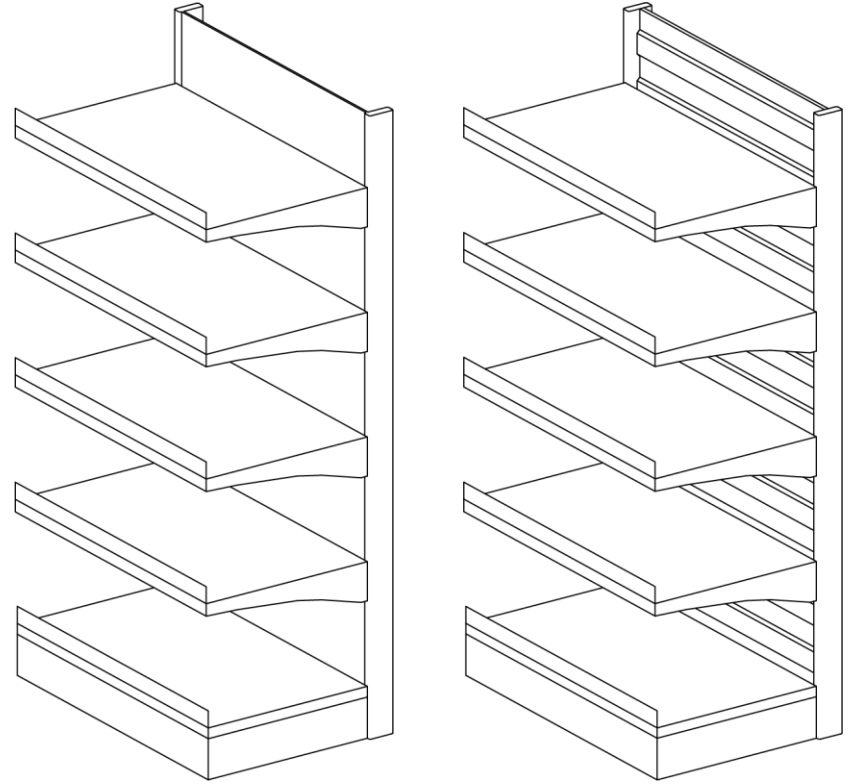


Dedicated solutions for various zones such as fruits and vegetables, bakery, alcohol, press, or promotional goods can also help to create an inviting and appealing environment that customers enjoy



The efficient usage of store space is another principle for a retailer's profitability. By using proper shelving systems, retailers maximize the area available for product display

The modular shelving systems from Modern Expo help to provide an efficient and attractive display for various products, creating a pleasant shopping experience for customers

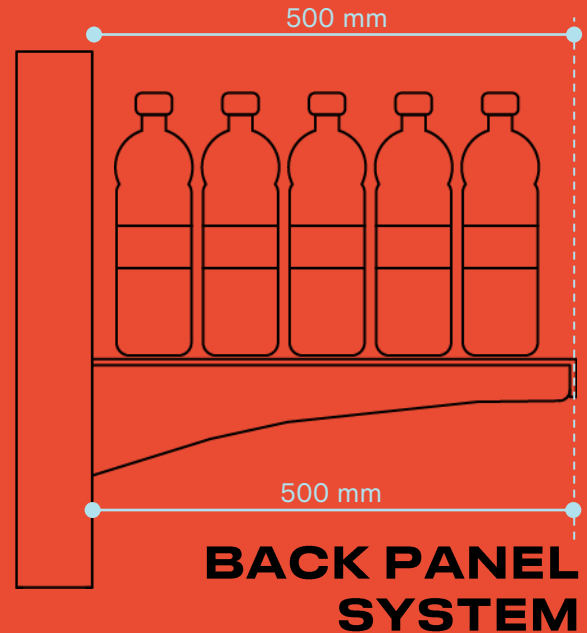
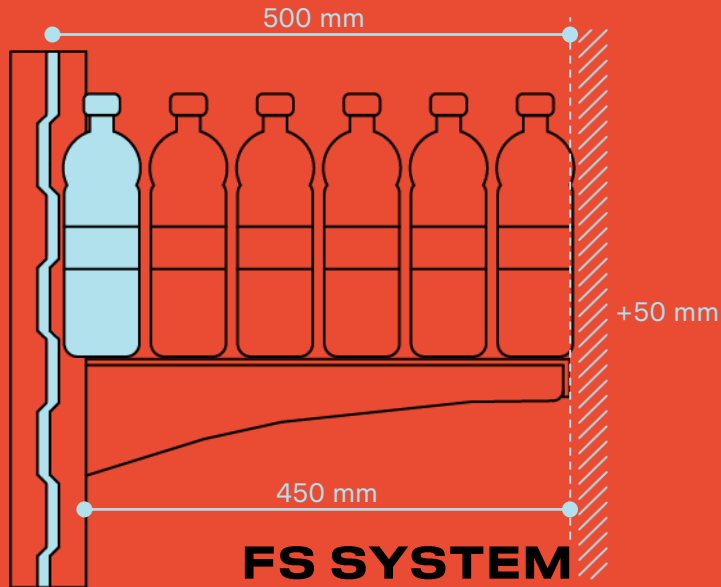




The core of Modern Expo Shelving is the **FS System** with middle back panel

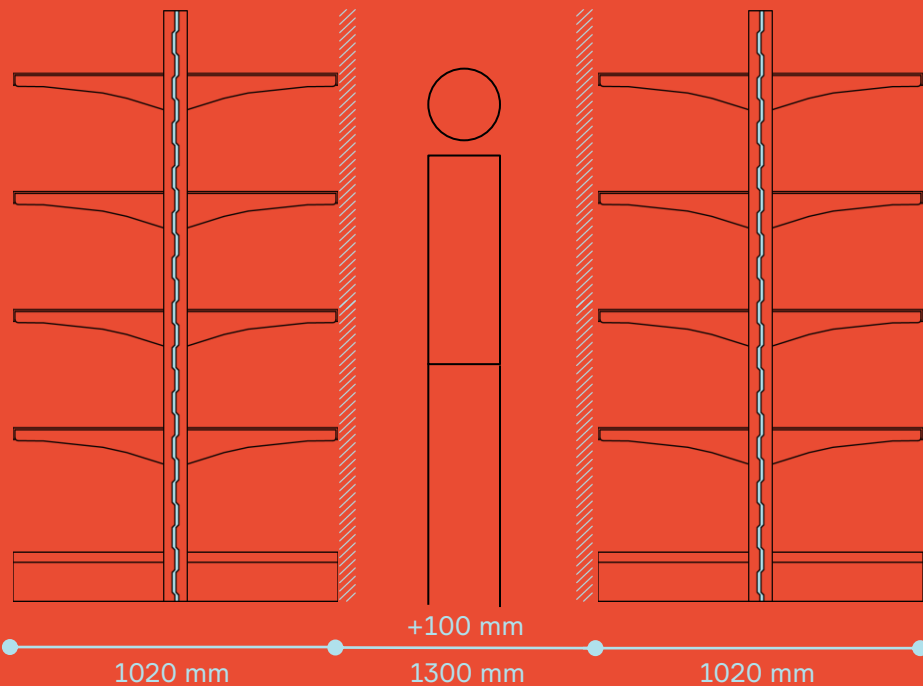
The FS system is designed to maximize the efficiency of the shopping space

Receive extra **50 mm** useful depth on each shelf, using the space which wasn't utilized between two back panels

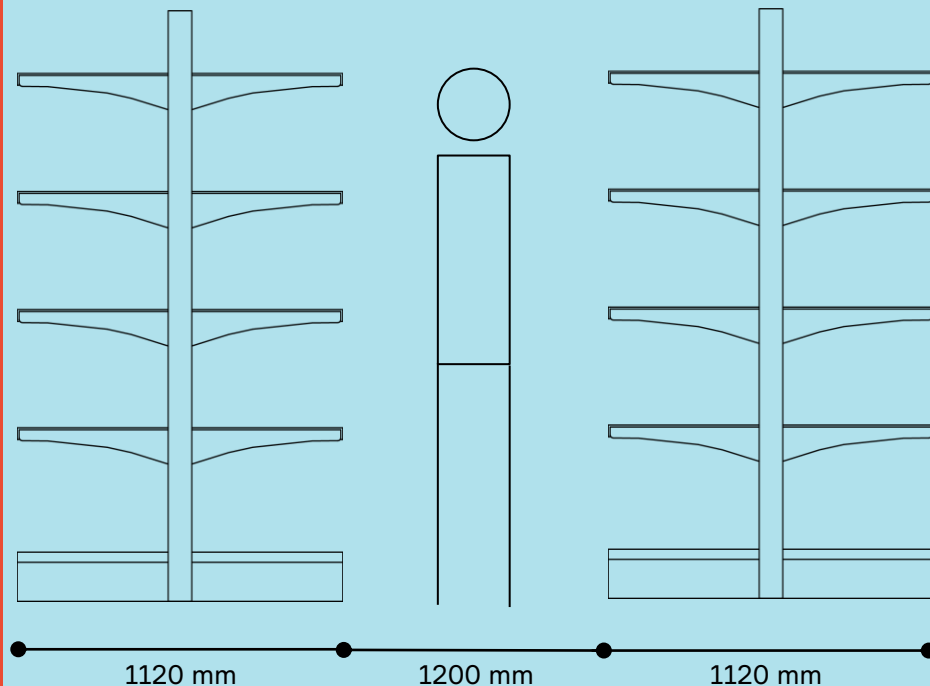


Increase the passage without reduction of the shelves useful depth

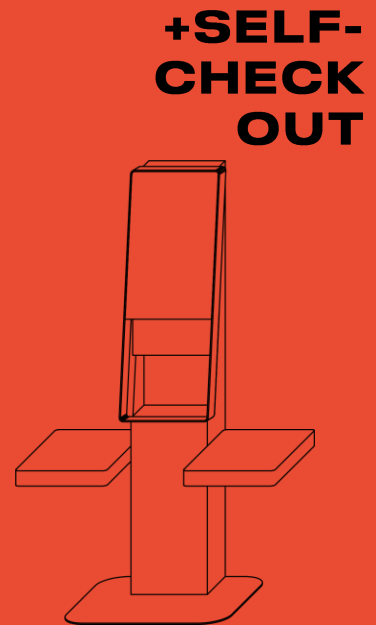
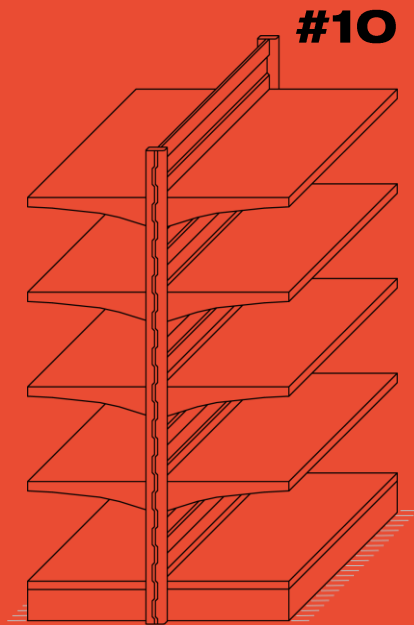
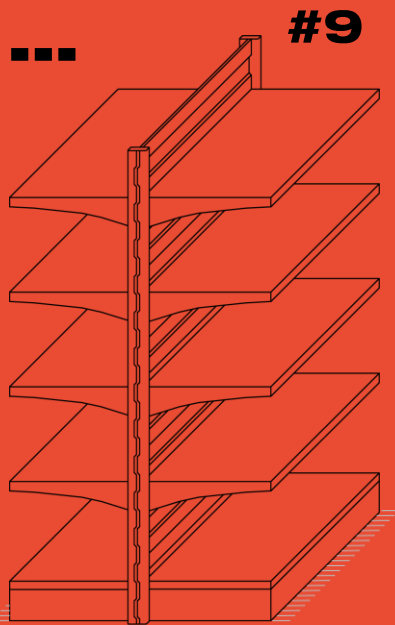
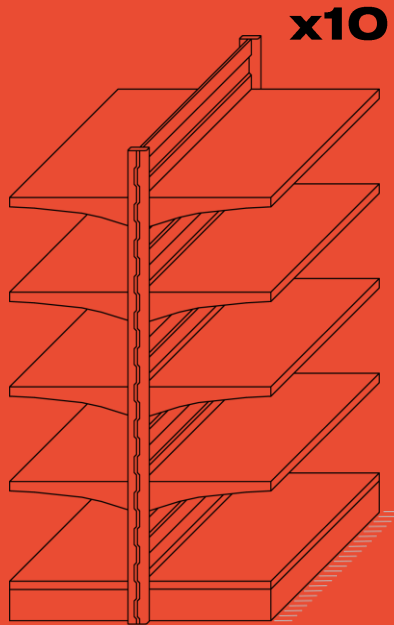
FS SYSTEM



BACK PANEL SYSTEM



Or even create one additional row of shelving system, maximizing the efficiency of the store

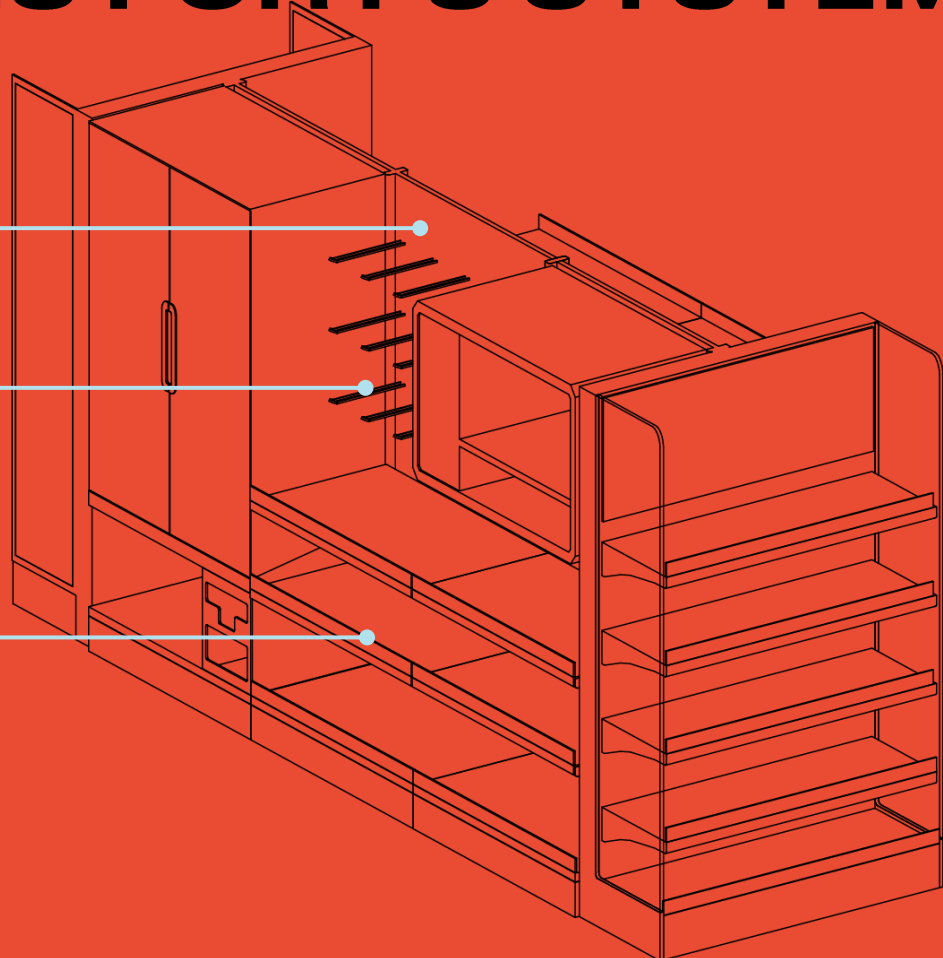


ACCESSORIES FOR FS SYSTEM

Wired back panel

Hooks for (with or without price holders)

Wired Barriers and dividers



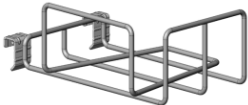
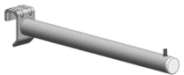
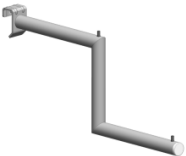
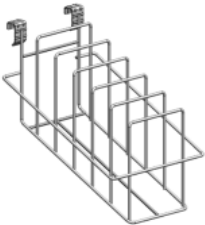
CUSTOMIZED HOOKS FOR DIFFERENT RETAIL FORMATS

TEXTILE

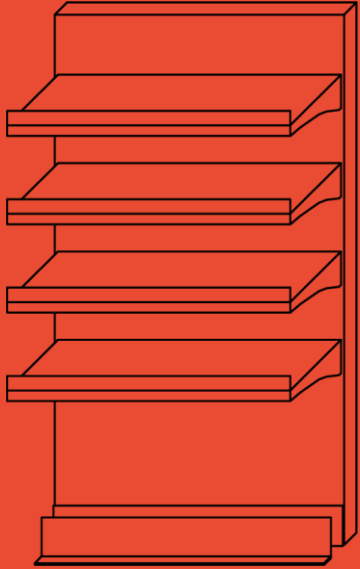
POPULAR

SPORT

HOUSEHOLD APPLIANCE



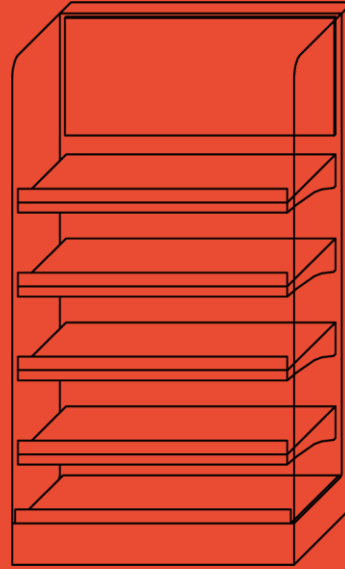
DIFFERENT TYPES OF GONDOLA END



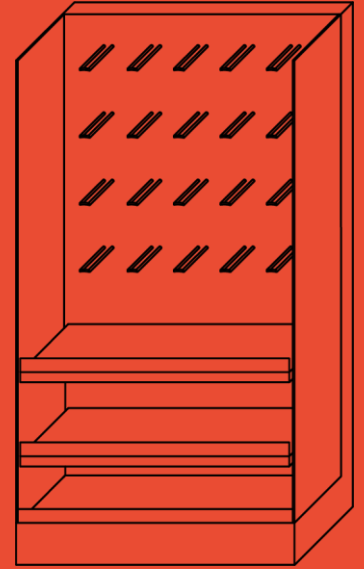
**STANDARD
SOLUTION WITH A
POSSIBILITY FOR
FREEZER
INSTALLATION**



**PREMIUM PROMO
SOLUTION**



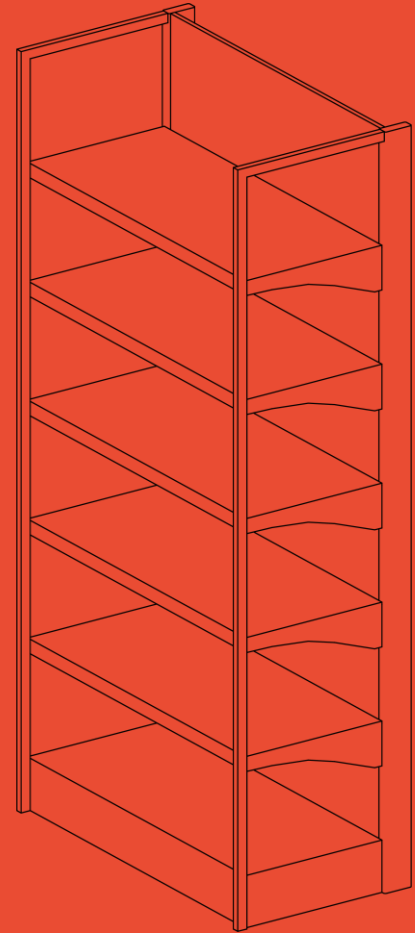
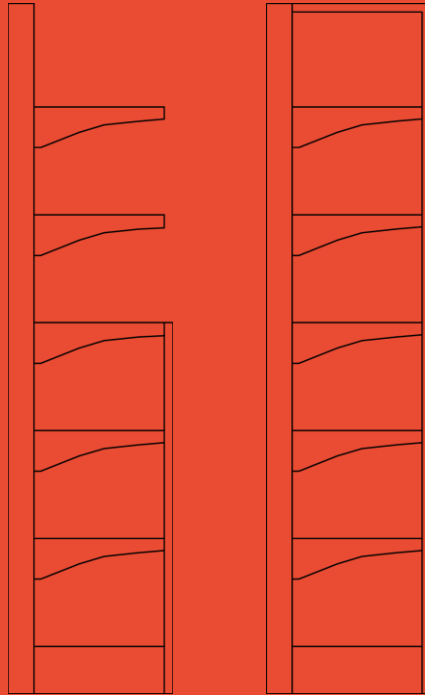
PROMO SOLUTION



**ROUNDED
SOLUTION**

FRONT UPRIGHT

Shelving with a front upright designed for high-load capacity and can withstand even 1000 kg load on one section

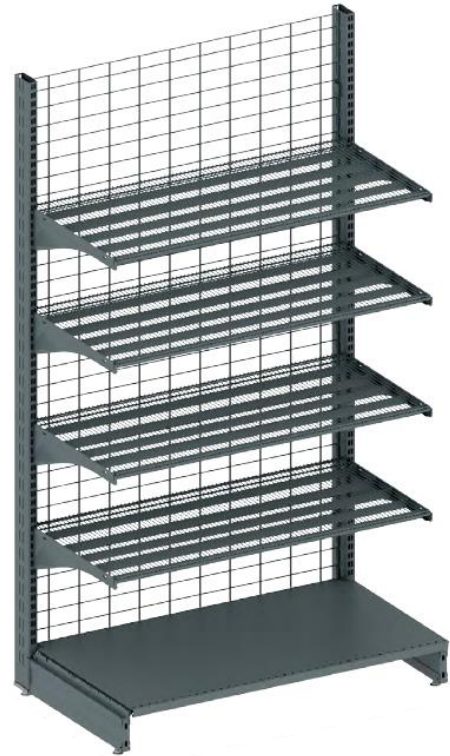


The Wire Shelving System with Middle Back Panel is a premium solution aiming to maximize the efficiency of the shopping space and product visibility. The sleek and modern design will complement any store aesthetic.

- **Eye-catching design**
- **Maximize the visibility of your goods for different retail formats**
- **Modular solution**
- **LED lighting for the best product exposition**



- **Eye-catching design**
- **Maximize the visibility of your goods for different retail formats**
- **Modular solution**
- **LED lighting for the best product exposition**



FS SHELVING SYSTEM – MIDDLE BACK PANEL SOLUTION

FEATURES:

- The most efficient use of shopping space
- The best solution for island units
- Design and building options are tailored to the store's concept and provide the most efficient use of shopping areas
- Huge quantity of accessory
- LED lighting for hinged shelves
- Wire shelf and back panel as an options

TECHNICAL SPECIFICATION:

- Width (W), mm: 665, 1000, 1250, 1330
- Shelves depth (D), mm: 250, 300, 350, 400, 450, 500, 550, 600, 650, 700, 750
- Height (H), mm: 1320, 1473, 1625, 1778, 1930, 2082, 2235, 2387
- Inclining angle for hinged shelves, °: -1, 15,
- Upright profile, mm: 80*30, 100*30
- Perforation pitch, mm: 25.4
- Base shelf level height, mm: 128-178



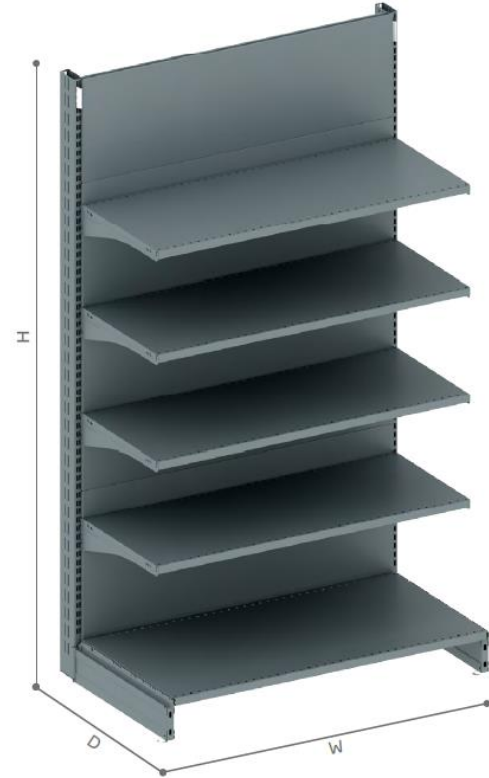
KM SHELVING SYSTEM — BACK PANEL SOLUTION

FEATURES:

- Reliable equipment base for different retail formats
- The best solution for wall units
- A perfect and practical solution for different retail formats and everyday usage
- Wide range of accessories
- Storage racks integration
- LED lightings for hinged shelves

TECHNICAL SPECIFICATION:

- Width (W), mm: 665, 1000, 1250, 1330
- Shelves depth (D), mm: 270, 300, 370, 400, 470, 500, 570, 600, 670,
- Height (H), mm: 1320, 1473, 1625, 1778, 1930, 2082, 2235, 2387
- Inclining angle for hinged shelves, °: -1, 15,
- Upright profile, mm: 80*30, 100*30
- Perforation pitch, mm: 25.4
- Base shelf level height, mm: 128-178



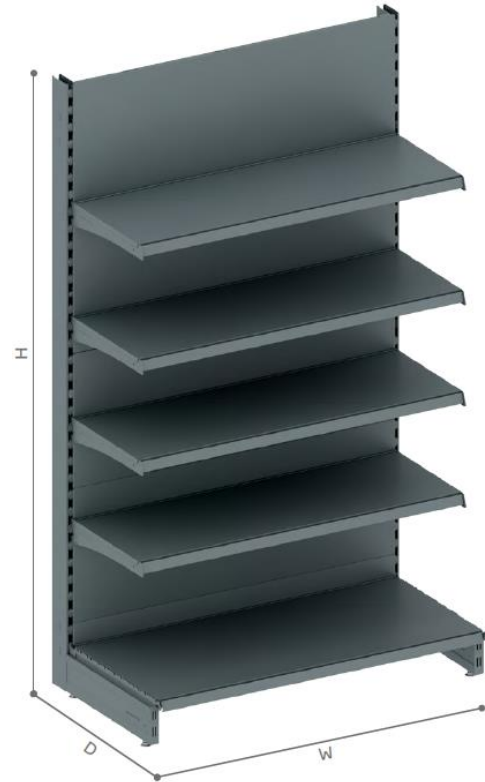
SG50 SHELVING SYSTEM — CLASSIC EUROPEAN SHELVING

FEATURES:

- Traditionally used in UK and DACH countries
- The perforation of the upright allows placement of shelves with a pitch of 50 mm
- SG50 is a classic shelving system, compatible with other similar systems
- The symmetry of the upright enables its easy installation
- U-shaped profiles in the front and back sides facilitate the easy installation of price holders, barriers, and dividers
- LED lightings for hinged shelves

TECHNICAL SPECIFICATION:

- Width (W), mm: 500, 665, 800, 1000, 1250, 1330
- Shelves depth (D), mm: 370, 420, 470, 570, 620, 670, 770
- Height (H), mm: 1200, 1400, 1600, 1800, 2000, 2100, 2200, 2400
- Inclining angle for hinged shelves, °: 0, 20, 35
- Upright profile, mm: 60*30, 80*30, 110*30
- Perforation pitch, mm: 50
- Base shelf level height, mm: 160-190



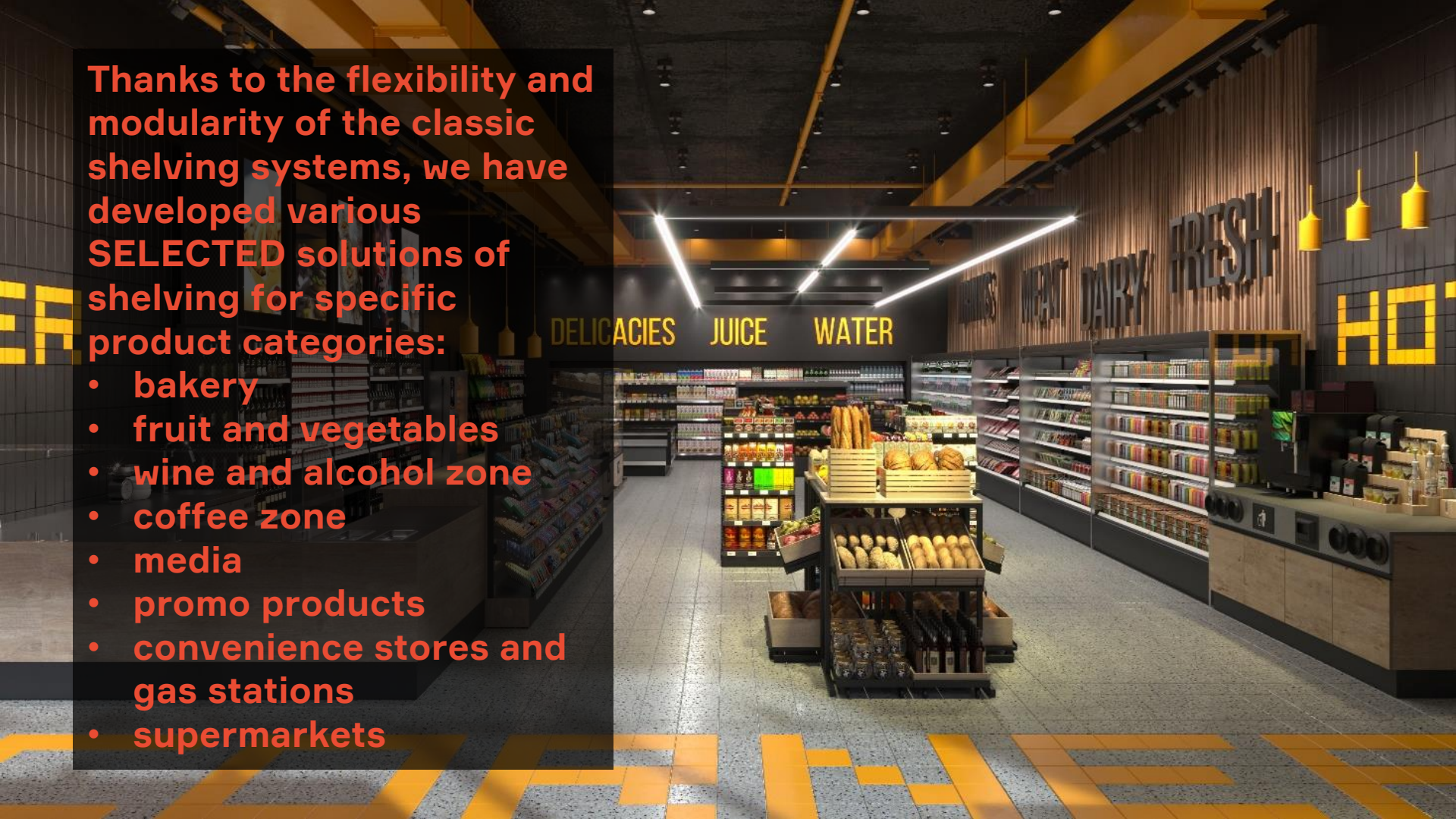
STANDARDS OF SAFETY AND QUALITY



By the way, all modern expo shelving systems are certified according to the european standards by the independent laboratory TÜV Rheinland group and Bureau Veritas — one of the leading international certification companies

Thanks to the flexibility and modularity of the classic shelving systems, we have developed various **SELECTED** solutions of shelving for specific product categories:

- bakery
- fruit and vegetables
- wine and alcohol zone
- coffee zone
- media
- promo products
- convenience stores and gas stations
- supermarkets



SELECTED BAKE

Selected Bake is a practical and essential solution that makes baked products zone a warm and welcoming place

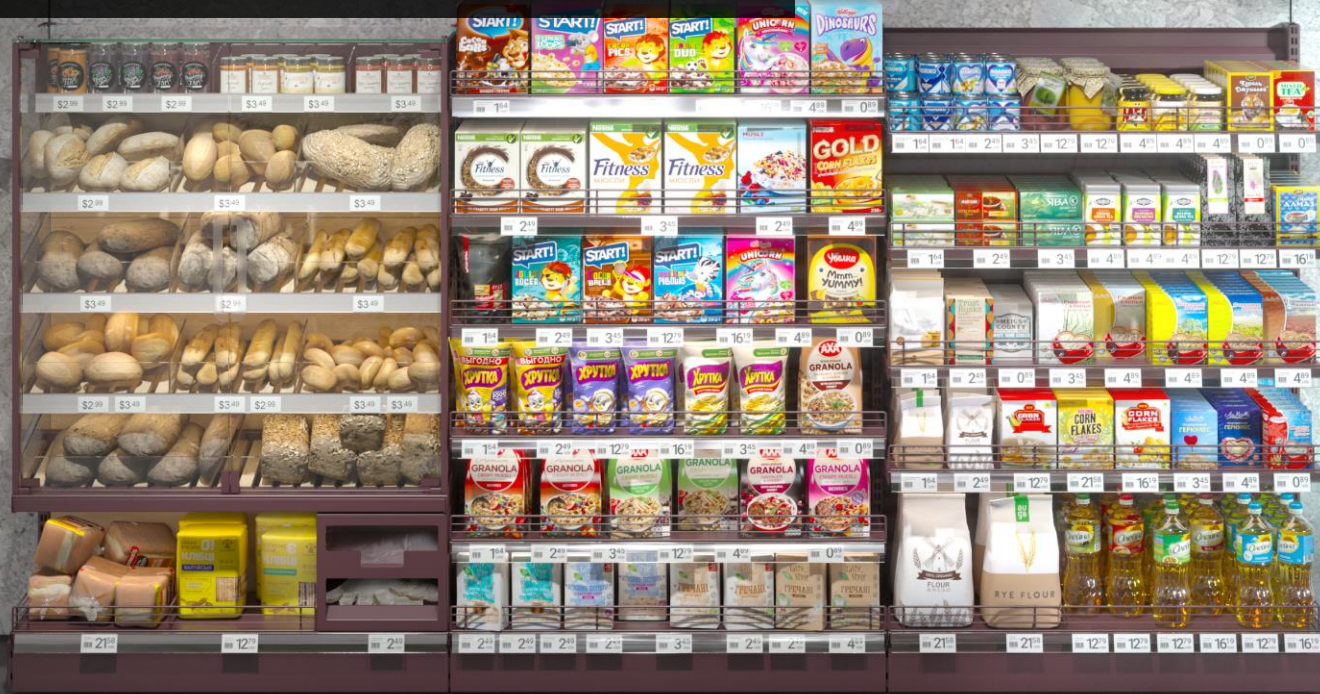
In other words, this is a traditional concept that fits well with the image of a modern store



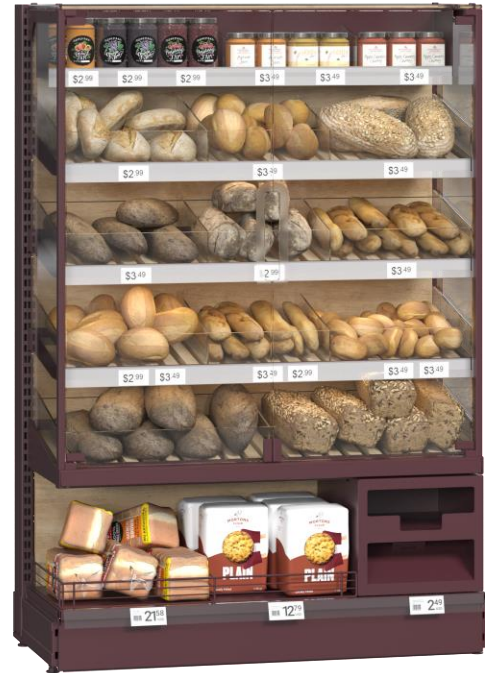
BREAD AREA / SELECTED BAKE



BREAD AREA / SELECTED BAKE



BREAD AREA / SELECTED BAKE



BREAD AREA / SELECTED BAKE

A section of the bakery counter featuring shelves of packaged goods. The top shelf displays various bottles of beverages. Below, there are shelves of packaged snacks, including bags of chips and boxes of 'FARLOUS' bread. At the bottom, there are boxes of 'HAND STRETCHED DOUC HA' bread. Price tags are visible on the shelves.

A coffee and tea station featuring a digital menu board displaying 'Take Away Coffee & Tea' with 'Pasta Friday' promotion. Below the menu is a coffee machine with a digital display. To the left, there are shelves of packaged goods, including bags of 'YUMMI' snacks. Price tags are visible on the shelves.

A bakery display case labeled 'BAKEHOUSE' at the top. The case is filled with various breads, including loaves and rolls, displayed on shelves. Price tags are visible on the shelves. The case is illuminated from within, highlighting the breads. Below the case, there is a counter area with a paper roll dispenser and a trash bin.



BREAD AREA / SELECTED BAKE



BREAD AREA VOLOKNO

VOLOKNO shelving collection consists of 3 types of modules and a wide range of additional accessories, that give plenty of abilities to create customized designs



BREAD AREA / VOLOKNO



SELECTED F&V

Selected F&V is a complete system for the bright, massive, exposition of fruits and vegetables

Proportions and functionalities are designed to maximize simplicity of use and assure the perfect product visibility

FOOD & DRINKS TO GO

ALWAYS FRESH LOCAL FRUITS



FRUITS & VEGETABLES AREA / SELECTED F&V



FRUITS & VEGETABLES AREA / GREORA

GREORA fruit and vegetable shelving collection is more than equipment. It suggests different solutions that reassemble open markets and implement an atmosphere of natural spaces — gardens and parks. It creates various mood messages for purchasing, communication, and experience exchange



FRUITS & VEGETABLES AREA / GREORA



SELECTED WINE

Selected Wine is a system with a wide range of standard equipment and accessories, which build an attractive and well-organized product presentation for an inspirational atmosphere

WANT A GLASS OF WINE



ALCOHOL AREA / SELECTED WINE





CABERNET

CHARDONNAY

ALCOHOL AREA ARCHIW

ARCHIW shelving collection is a new vision of the wine and alco product zones

ARCHIW's design comes from architectural forms. Lightweight construction, thin shelves and customized accessories create a dynamic and atmospheric display of products

ALCOHOL AREA / ARCHIW



RIESLING

CABERNET

CHARDON

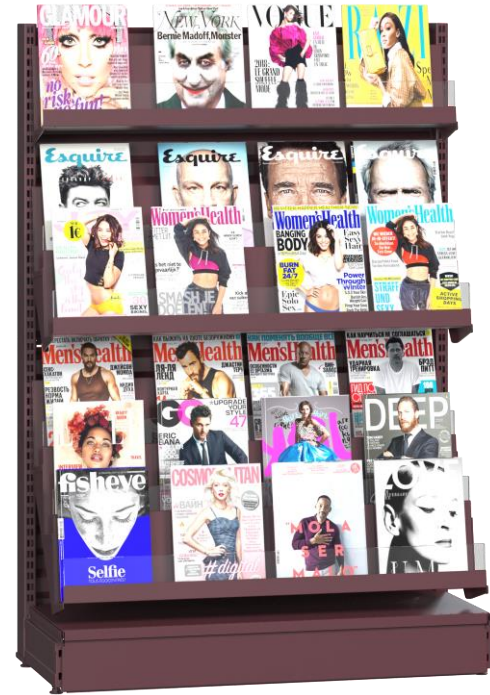
SELECTED MEDIA

The Media shelving system is a perfect solution for retailers looking to increase their media offerings

The dedicated design of this system is specifically tailored to meet the needs of press, media, and book retailing, providing a dedicated space for these items



SELECTED MEDIA



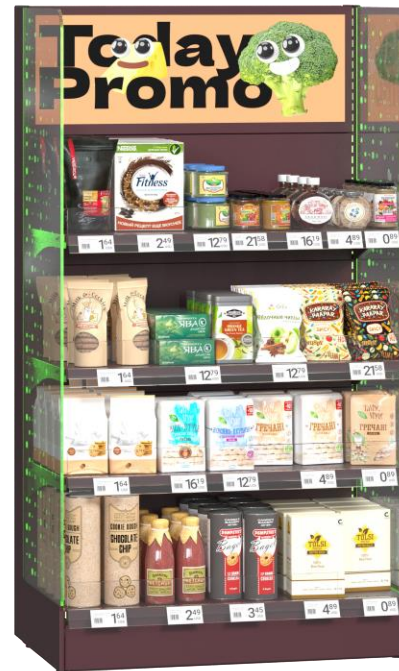
SELECTED PROMO

The premium End Case Shelving from Modern Expo is designed to focus customer attention on specific promotional products

The modular design allows for flexibility and easy customization, while the bright LED sidewalls and promotional lightbox provide an eye-catching display



SELECTED PROMO



SELECTED FMCG



SELECTED FMCG



COFFICE

Every store has a place that can be called the "heart" of the entire retail space. This area doesn't leave any customers indifferent

COFFICE from Modern-Expo is a coffee point solution that will increase your sales and make the "to go" area more attractive



COFFICE

A tall shelving unit with multiple shelves displaying various packaged goods. The top shelf features several bottles of beverages. Below, there are shelves with bags of snacks, boxes of 'FARLOU' (a type of bread or snack), and boxes of 'HAND STRETCHED DOUC'. Price tags are visible on the shelves.

COFFICE

A coffee station featuring a coffee machine, a menu board, and shelves with coffee-related products. The menu board displays 'Take Away Coffee & Tea' with 'Pasta Friday' promotion. Below the machine are shelves with coffee syrups, coffee pods, and other coffee accessories. Price tags are visible on the shelves.

BAKEHOUSE

A bakery display case with glass doors showing various breads and pastries on shelves. The shelves are labeled with prices, such as '€ 12', '€ 21', '€ 16', '€ 4', '€ 21', '€ 12', and '€ 19'. The display case is illuminated from within, highlighting the fresh baked goods.



COFFICE



CONVENIENCE STORE

– it is the format of stores, which shows the fastest dynamics of development and growth in all markets

Modern Expo offers solutions for Convenience store formats, which allow you to provide additional services: food and drinks solutions to go, automation and digitization of the payment process, etc



CONVENIENCE STORE

CORNER





SUPERMARKET

Modern Expo's assortment is a perfect instrument for the creation of supermarkets of the future and attracting visitors with new features as well as providing a seamless user experience

Our assortment is a tool for creating integral and comfortable retail spaces, not only for buying goods but also for getting impressions



SUPERMARKET

VEGETABLES
FRUITS

ALCOHOL



SUPERMARKET

BAKERY

BAKERY

BOOKSTORE



SHELVING SYSTEMS PORTFOLIO

ROZETKA PHARMACY

UKRAINE

2021



E.LECLERC

FRANCE

2019



NET MARKET

GERMANY

2021



UPG

UKRAINE

2021



BINGO PLUS

BOSNIA AND
HERZEGOVINA

2020



CARE FOUR

POLAND

2020



ELDORADO

UKRAINE

2020



ROZETKA

UKRAINE

2020



SILPO

UKRAINE

2020



DUNES

IRELAND

2019



РУКАВЫ СНКА

UKRAINE

2019



ABOUT US

MODERN EXPO

Today we have become a platform bringing together leading professionals into powerful teams of **R&D, IT, retail design, engineering**, etc., working in synergy to create the perfect retail of the future by **Modern Expo**.

 **MINT**

[IT]

 **SQUARES**

[DESIGN]

 **ENGINEERING**

[MACHINERY]

MODERN EXPO has been a top company in creation of modern retail for more than 20 years.



We are convinced that modern retail is a phenomenon encompassing a multilevel system of obtaining goods with the ultimate consumer. Today, it's not just the physical store space, but also the solutions for E-commerce, warehouses, logistics and integrated supply chain.



Modern Expo is **9** high-tech **PRODUCTION UNITS** specializing in different types of equipment. Our manufacture is one of the most powerful in the world, we provide mass replication in roll-outs and ensure meeting each of our products with European safety and quality standards (EN and FEM).

MODERN GEOGRAPHY

A stylized map of Europe and the Middle East, rendered in a light blue color against a black background. The map shows the outlines of countries and major cities. Several cities are marked with a red dot and labeled in red capital letters: LONDON, PARIS, BERLIN, WARSAW, LUBLIN, LUTSK, KYIV, and DUBAI. The text 'MODERN GEOGRAPHY' is written in large, bold, red capital letters at the top left of the image.

We supply our
products to more
than **75** countries

MODERN NUMBERS

2200 employees

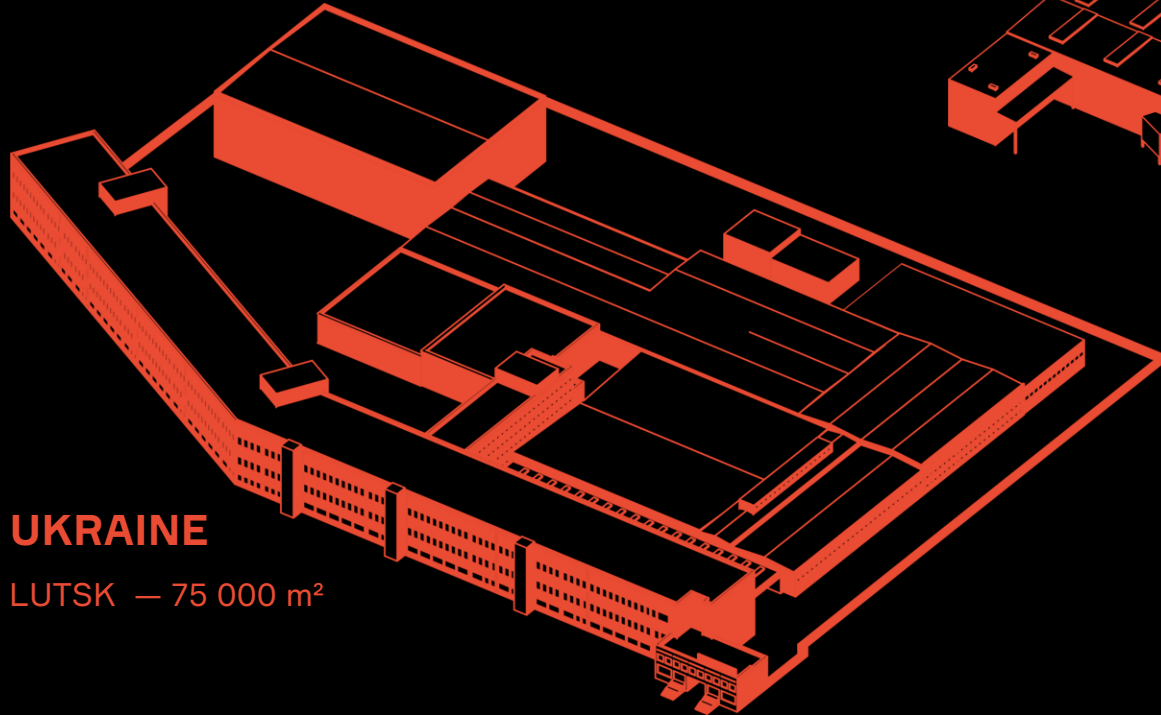
83 500 m² production facilities

100+ dealers

MODERN WORLDS

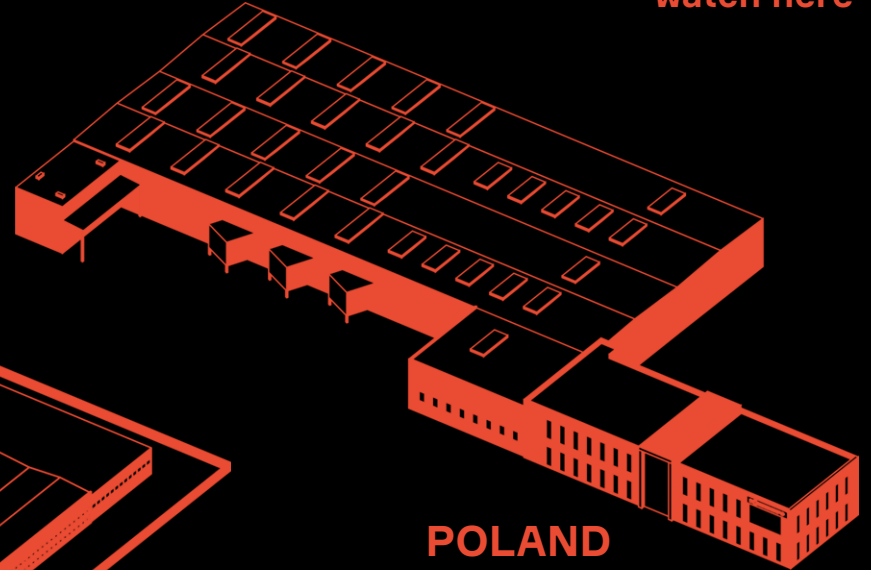


watch here



UKRAINE

LUTSK — 75 000 m²



POLAND

LUBLIN — 8 500 m²

MODERN CLIENTS

castorama



allegro

WAITROSE



Intermarché

zabka



SPAR



ATB

coop

أسواق التميمي
tamimi markets

صيدليات الدواء
al dawaa pharmacies
رعاية بلا حدود | Unlimited Care

REWE



CONAD

NESTO
All that you need.

DOLLAR \$ STORE
Mighty fine prices Every Day

araz

E.Leclerc

MIX
Mart

ROSSMANN

#WEAREMODERN

**STAY IN TOUCH!
FOLLOW US HERE:**

