


PHARMODERN

PHARMACY, HEALTH &
BEAUTY SOLUTIONS

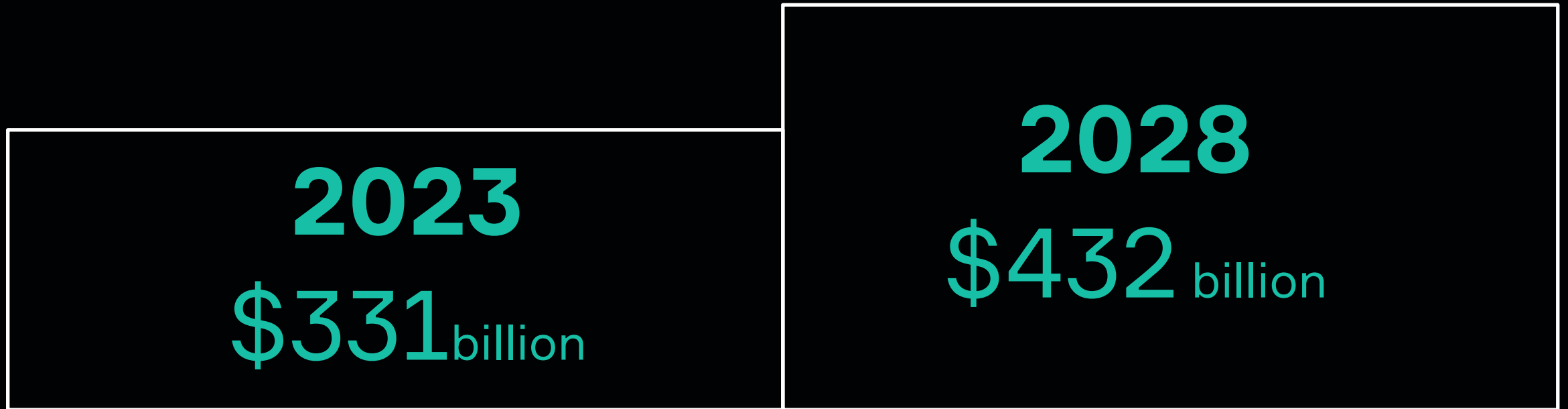
MODERN EXPO



Modern consumers prioritize their **health and wellness.**

Pharmacies become the primary stopover, where customers seek the **convenience** of a hassle-free medicine purchasing experience.

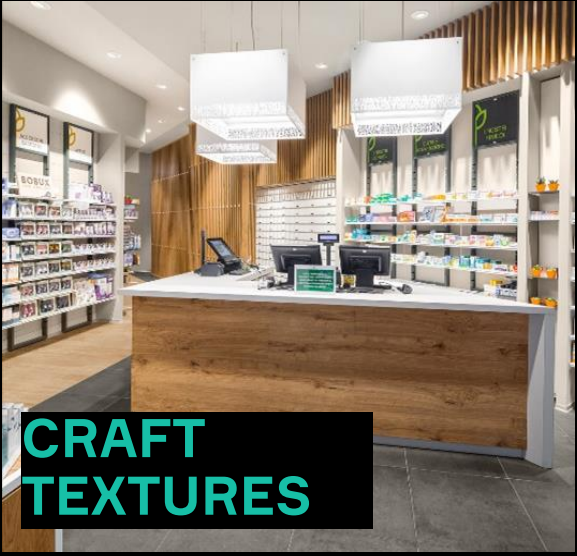
EUROPE PHARMACEUTICAL MARKET

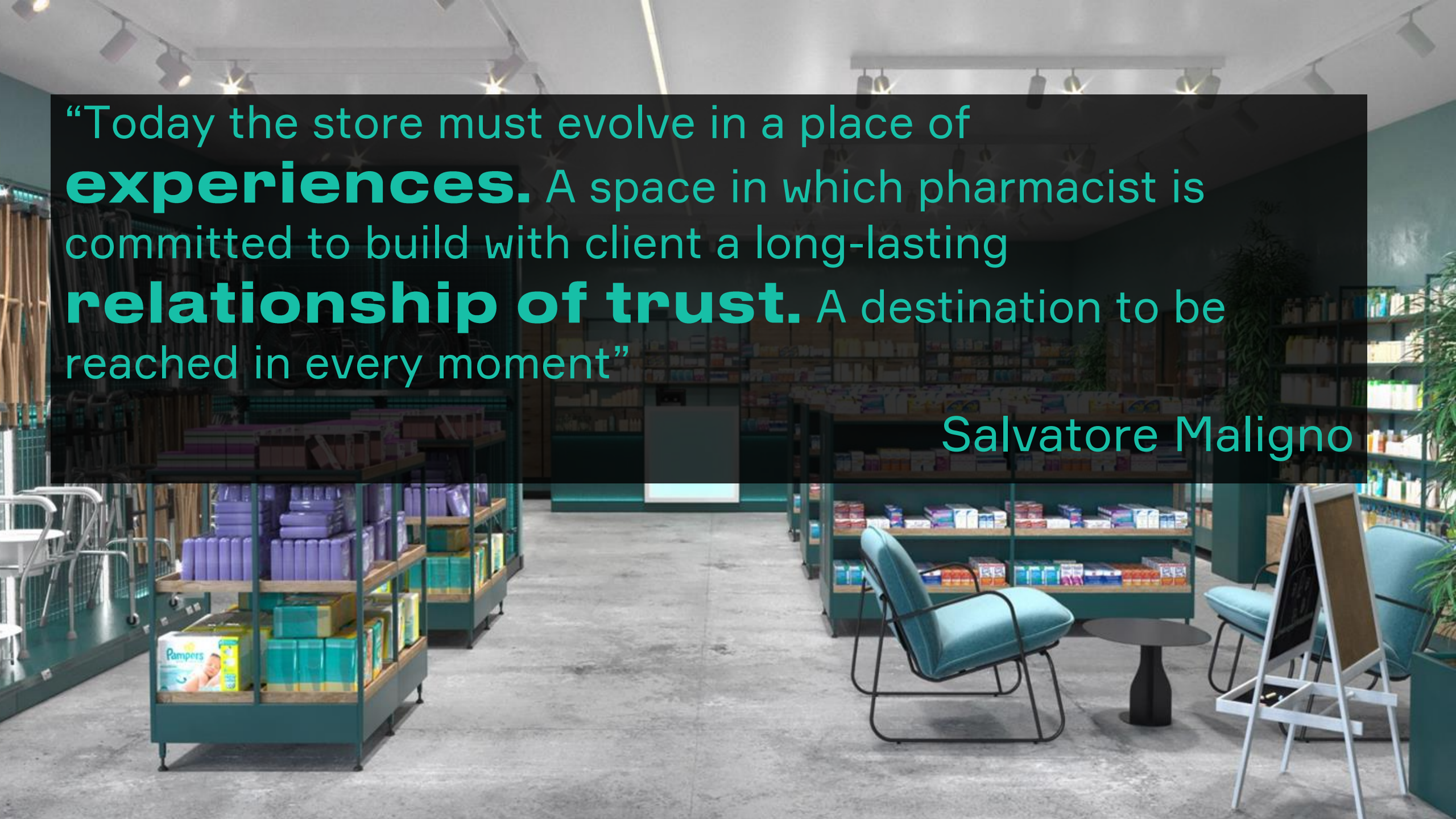


CAGR 5.4%

[*according to a report by Grand View Research](#)

PHARMACY TRENDS





“Today the store must evolve in a place of **experiences**. A space in which pharmacist is committed to build with client a long-lasting **relationship of trust**. A destination to be reached in every moment”

Salvatore Maligno



In response to the evolving needs of modern clients, we introduce **PHARMODERN** collection, which consists of versatile shelving systems, a welcoming **checkout area**, and a cutting-edge solution for seamless **Click&Collect** implementation - LOKO parcel lockers.

Open shelving systems for faster item retrieval and shopping convenience.





Flexible design for
effortless movement
and rearrangement.

Adaptable solutions for
varying pharmacies sizes.



Diverse colours and materials for inviting and welcoming environments.



Customized solutions with secure doors for the safe storage of pharmacy products.





Ergonomic and well-organized checkout zone.

PRODUCT PORTFOLIO

MOBILE GONDOLA ISLAND

The wheels enable quick movement of the **GONDOLA**, ensuring that your retail space remains **dynamic, adaptable, and consistently optimized** to enhance customer engagement and drive sales.



PREMIUM GONDOLA ISLAND

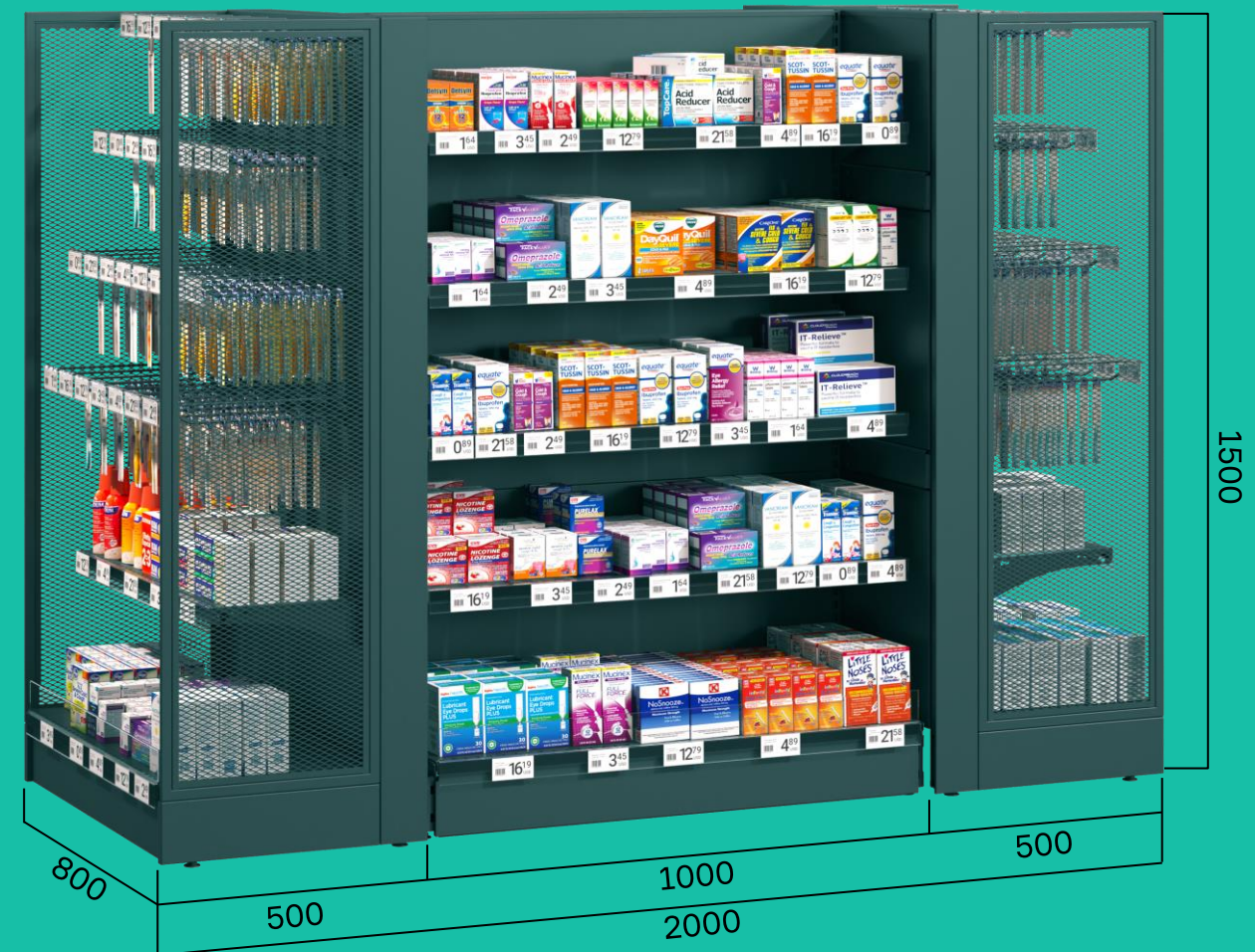
GONDOLA ISLAND is the **first thing customers see** after entering the pharmacy.

LED lighting illuminates the lateral panels of the GONDOLA, **directing clients' attention** to the products on the shelves and creating an engaging shopping experience.



STATIONARY GONDOLA ISLAND

The optimal height of the **GONDOLA ISLAND** ensures that customers can easily **view the entire space**, allowing them to grasp the full range of offerings in your pharmacy with just one glance.



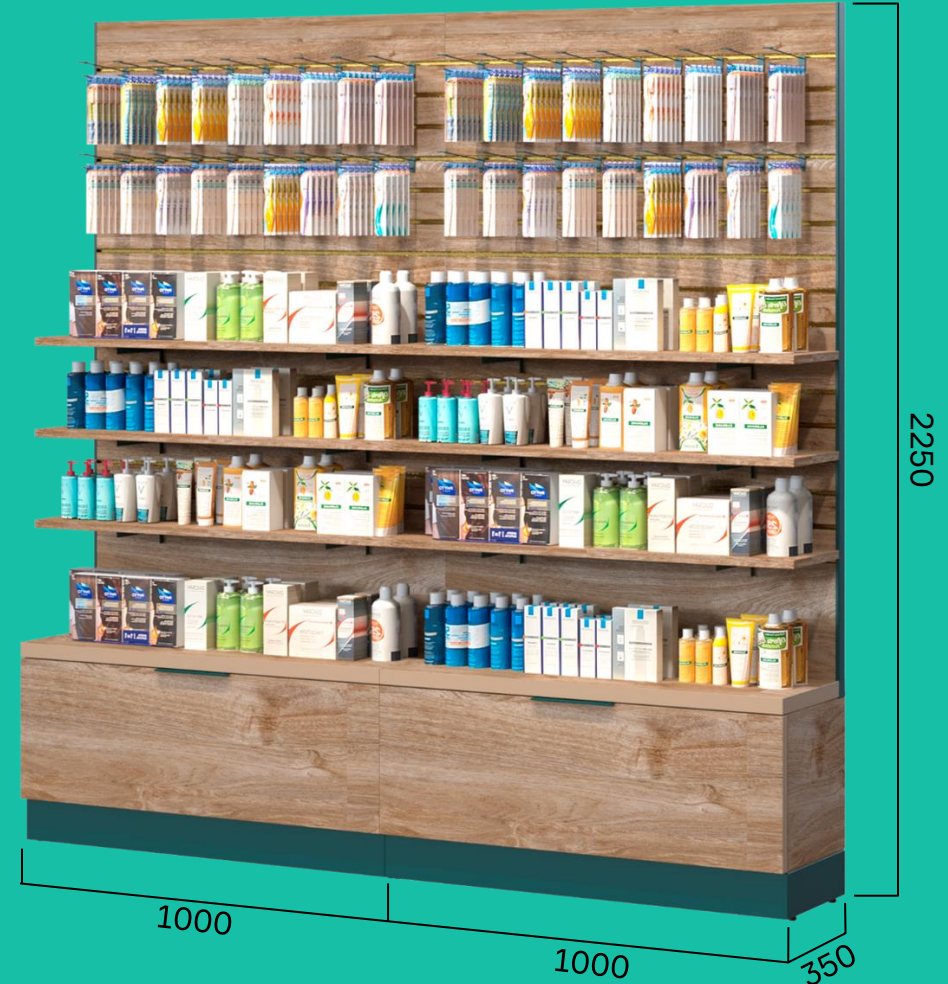
WALL UNIT WITH BOTTOM DRAWER

This functional solution features a thin tube frame that highlights the **focus on displaying products**, while the bottom drawer provides convenient storage for easy access to **additional inventory** and supplies.



WALL UNIT WITH BOTTOM DRAWER AND SLATWALL

This eye-catching display features **height-adjustable shelves** for showcasing various pharmaceutical products, a slatwall system for **specialized items**, and a spacious bottom drawer for convenient storage.



DISPLAY SHOWCASE WITH TRANSPARENT GLASS DOORS

This stylish unit with glass doors provides a **clear view** of displayed products while ensuring their **protection and security.**



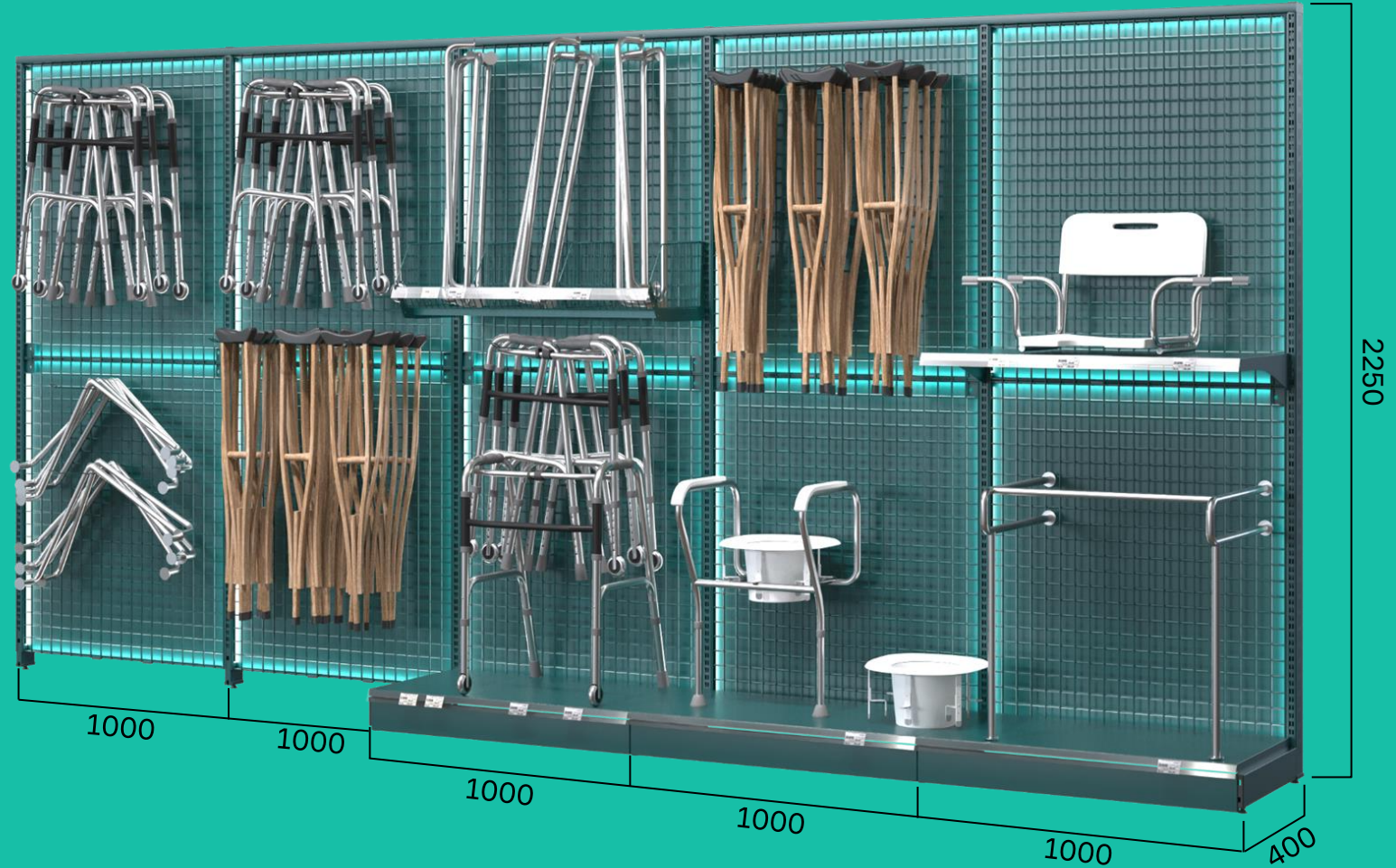
WALL UNITS WITH CHIPBOARD BACK PANEL

With height-adjustable shelves, you have the flexibility to customize the layout according to your specific requirements, allowing you to accommodate a diverse range of items.



WALL UNIT WITH LED ILLUMINATION

The wire back panel provides stability and adds a touch of style, while the integrated LED lights highlight your items.



CHECKOUT ZONE

The modular design enables easy customization and configuration of units to **fit your space requirements**, while the shelves are specifically designed to enhance **sales of impulse products**.



CHECKOUT ZONE WALL CABINET WITH SHELVES

Convenient storage and display options encourage customers to make **additional purchases** during the checkout process.



CHECKOUT ZONE WALL CABINET WITH DRAWERS

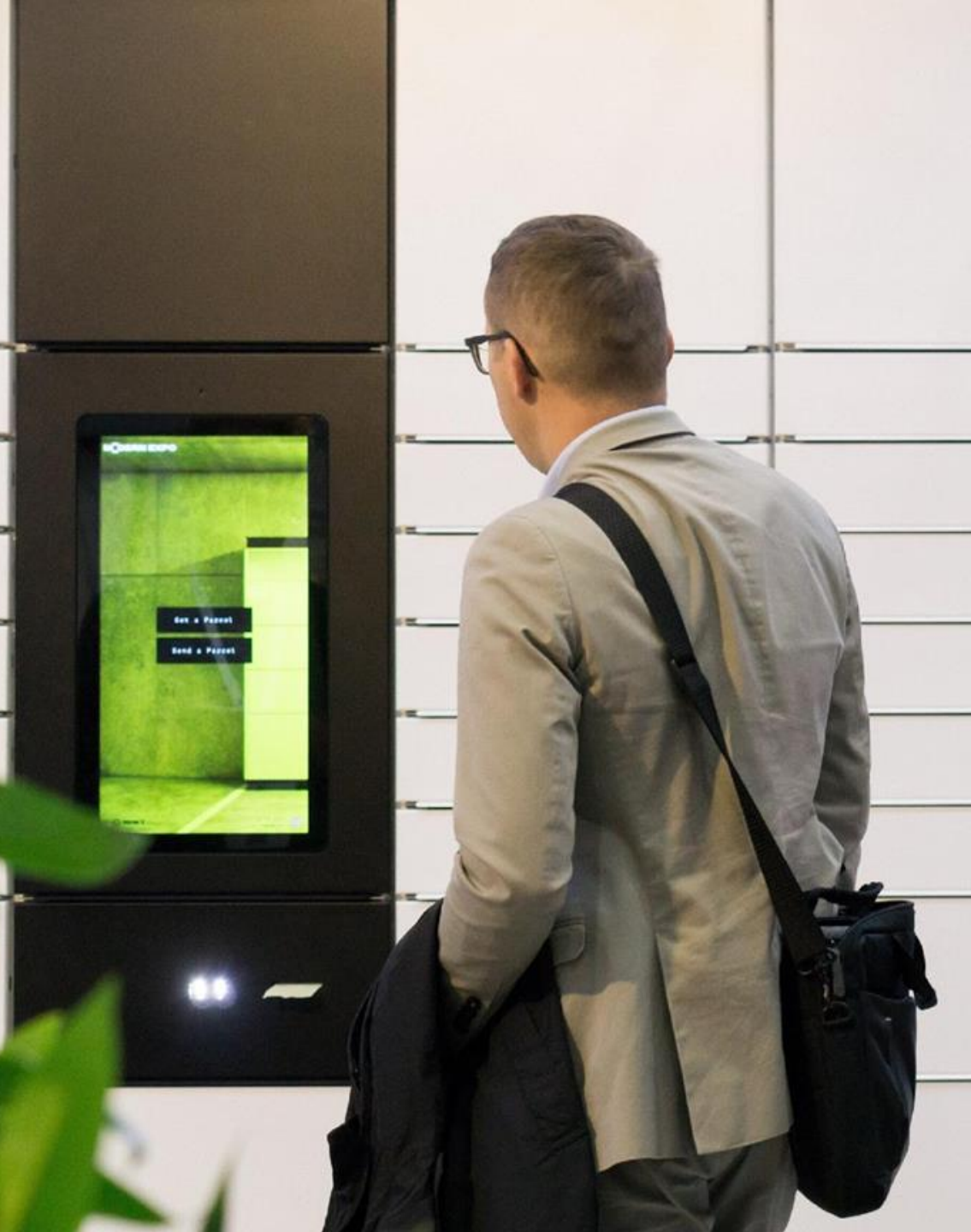
Dedicated drawers for
secure and efficient storage
of **prescription-only**
goods at the checkout area.



The online pharmacy market is expected to grow at an annual **rate of 9.56%**, reaching a market volume of **\$8.5 billion by 2027**, with an average revenue per user of **\$25***.

[*according to a report by Grand View Research](#)

Modern Expo offers a comprehensive parcel locker ecosystem, enabling the seamless implementation of the **CLICK&COLLECT** business model.



COMPLETE SOFTWARE ENVIRONMENT



ELASTIC ONLINE STORE



MOBILE APPS



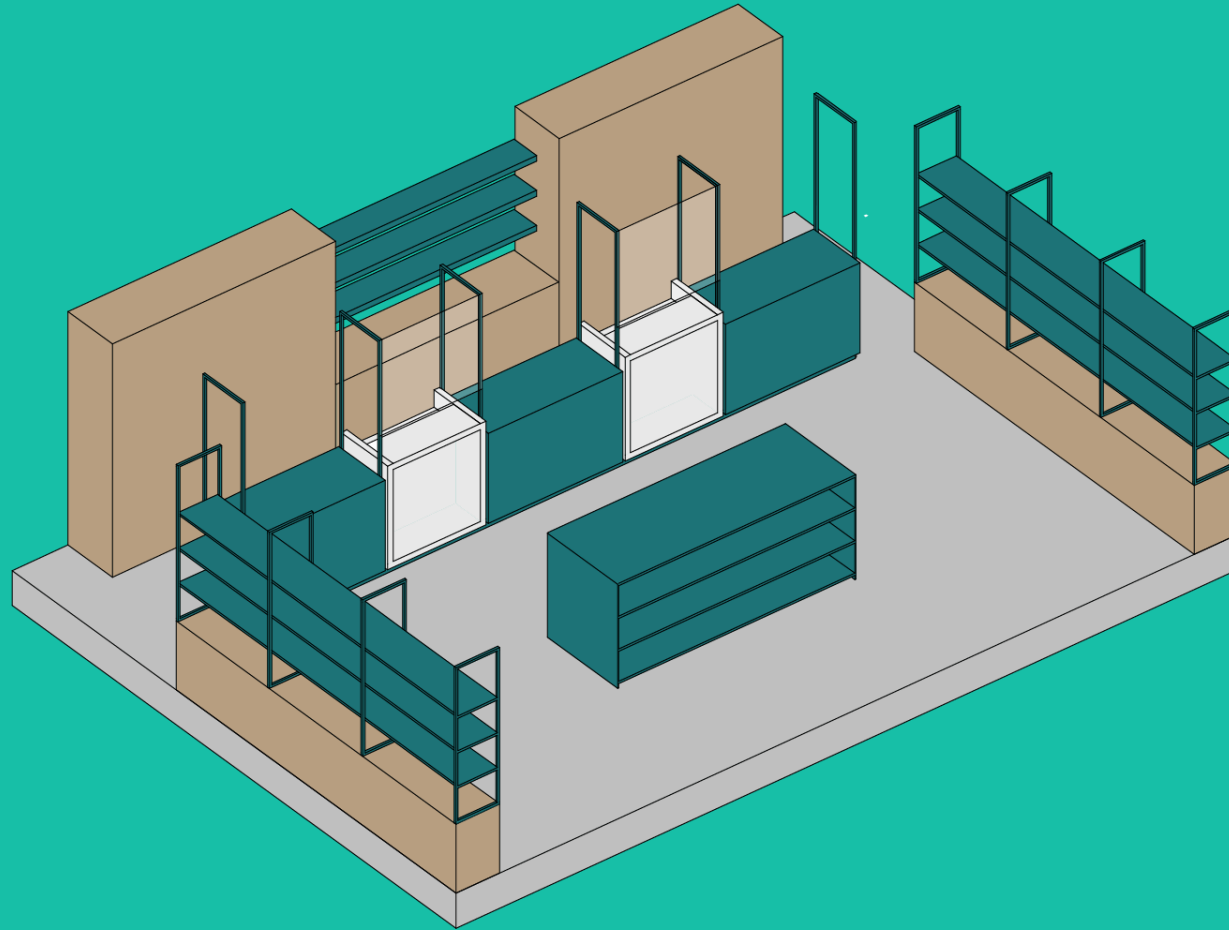
CONTROL DASHBOARD

WIDE RANGE OF LOKO PARCEL LOCKERS

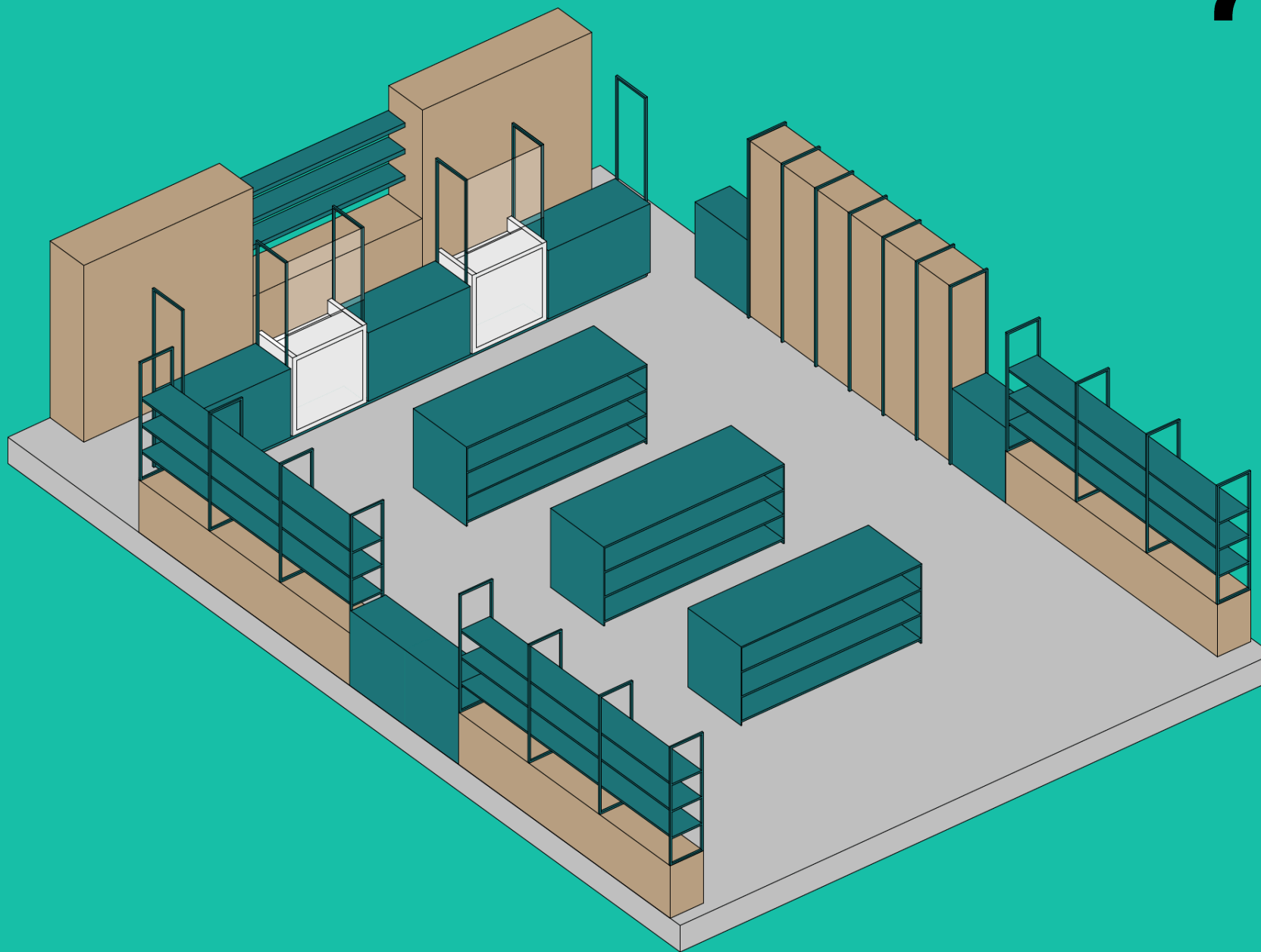


MODULARITY

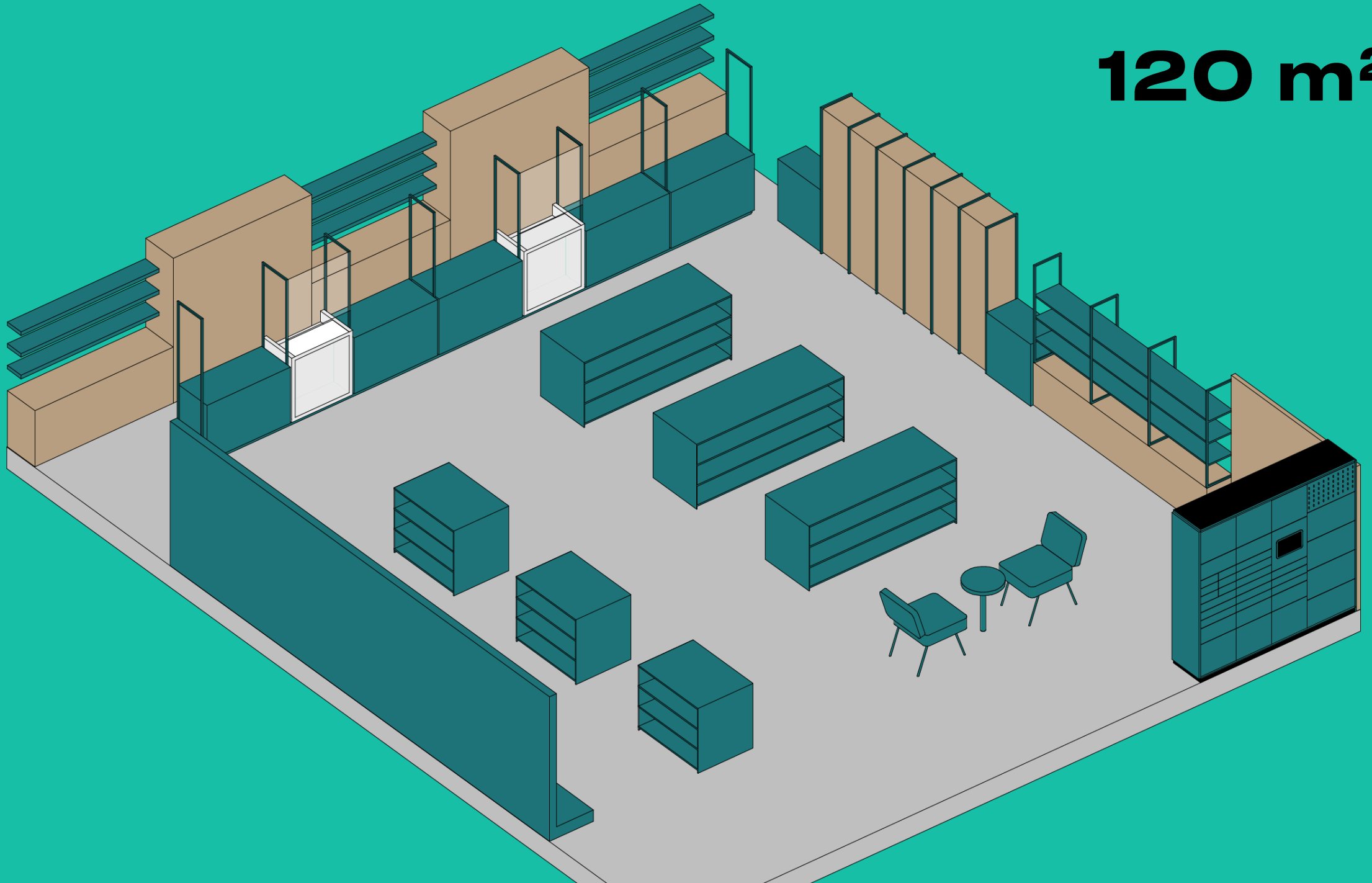
35 m²



70 m²



120 m²



OUR CASES

ROZETKA, UKRAINE

ROZETKA Аптека



ROZETKA, UKRAINE



ROZETKA, UKRAINE



ROZETKA, UKRAINE



AL-DAWAA, SAUDI ARABIA

بين يديك
personal care



AL-DAWAA, SAUDI ARABIA



APRIUM PHARMACY, FRANCE



ABOUT US

M²DERN EXPO

Today we have become a platform bringing together leading professionals into powerful teams of **R&D, IT, retail design, engineering**, etc., working in synergy to create the perfect retail of the future by Modern Expo.

WE CREATE
RETAIL NEW

 **MINT**

[IT]

 **SQUARES**

[DESIGN]

 **ENGINEERING**

[MACHINERY]

MODERN EXPO has been a top company in creation of modern retail for more than 20 years.



We are convinced that modern retail is a phenomenon encompassing a multilevel system of obtaining goods with the ultimate consumer. Today, it's not just the physical store space, but also the solutions for E-commerce, pharmacies, warehouses, logistics and integrated supply chain.



Modern Expo is **9** high-tech **PRODUCTION**
UNITS specializing in different types of equipment. Our
manufacture is one of the most powerful in the world, we provide
mass replication in roll-outs and ensure meeting each of our
products with European safety and quality standards (EN and
FEM).

MODERN GEOGRAPHY

A stylized map of Europe and the Middle East, rendered in a light blue color against a black background. The map shows the outlines of countries and major cities. Several cities are marked with red dots and labeled in white capital letters: LONDON, PARIS, BERLIN, WARSAW, LUBLIN, LUTSK, KYIV, and DUBAI. The text 'MODERN GEOGRAPHY' is written in large, bold, white capital letters at the top of the image.

We supply our
products to more
than **75** countries

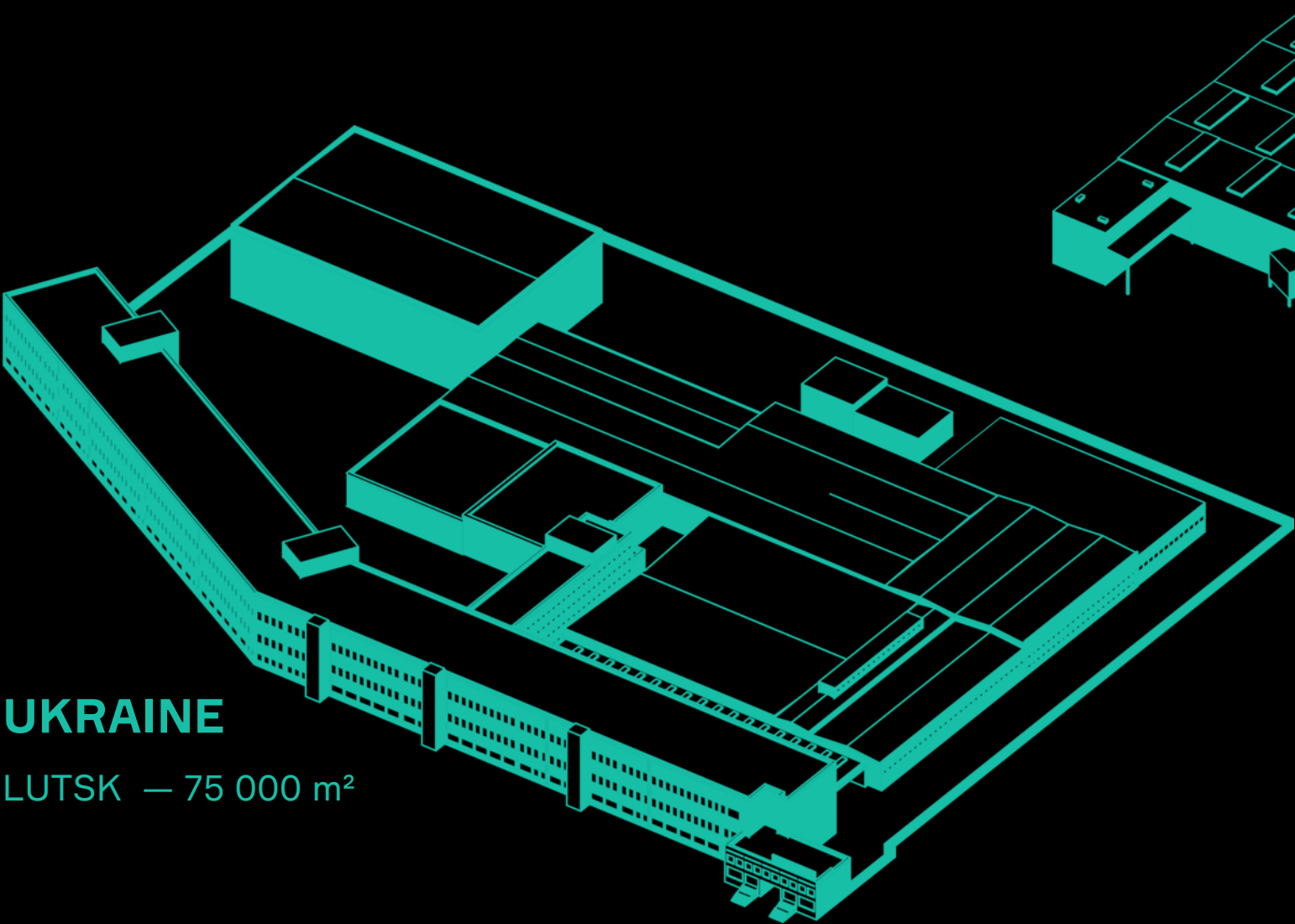
MODERN NUMBERS

2200 employees

83 500 m² production facilities

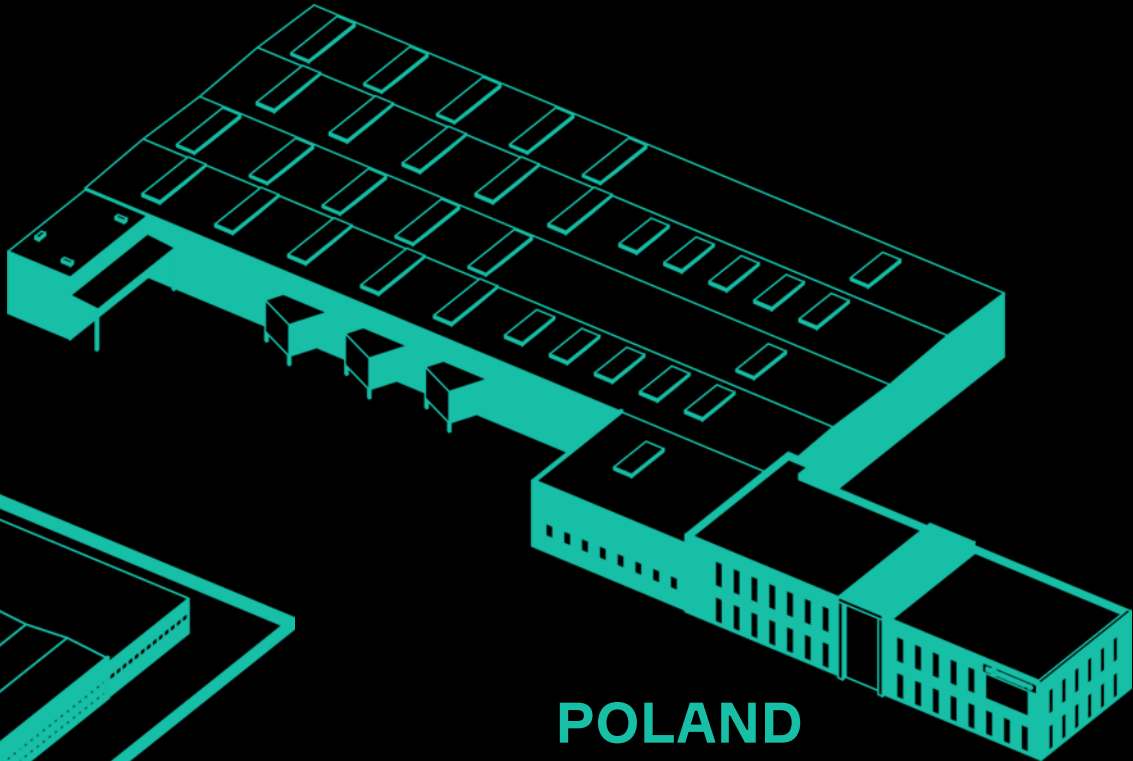
100+ dealers

MODERN WORLDS



UKRAINE

LUTSK — 75 000 m²



POLAND

LUBLIN — 8 500 m²

MODERN CLIENTS

castorama



Carrefour

allegro

WAITROSE



Intermarché

zabka



SAMEDAY
yourway.

SPAR



zilnic preturi mici

ATB

coop

أسواق التميمي
tamimi markets

صيدليات الدواء
al dawaa pharmacies
رعاية بلا حدود | Unlimited Care

REWE



EDEKA

CONAD

نستو
NESTO
All that you need.

DOLLAR\$TORE
Mighty fine prices Every Day

araz

E.Leclerc

MIX
Mart

ROSSMANN

#WEAREMODERN

STAY IN TOUCH!
FOLLOW US HERE:

